



KT RANCHES & HARVIE CREST CATTLE

2020
Bull Sale
2020

MARCH 21, 2020 • OLDS, AB • 6:00PM
SIMMENTAL • SIMANGUS • ANGUS

Welcome Fellow Cattle Producers

It is with great excitement we welcome you to our first annual bull sale.

Our goal is to make the very best purebred bulls based on conformation, consistency, temperament and growth. Our bulls will be ready to breed and have longevity in their breeding career. We have acquired diverse genetics from the very best cow families in the Simmental and Angus breeds. Our program uses natural breeding, artificial insemination, and embryo transplants to bring you quality bulls. We are presenting a mix of calving ease heifer bulls and high performance bulls for your mature cattle that will add extra pounds of profit.

KT Ranches completed the build of our new calving facility, complete with vet room and recently started IFV flushing on farm. We welcomed "Mr Scott" Anderson to the team this summer and enjoy his wealth of cattle knowledge to help guide us in this adventure. Our participation in the Armstrong Interior Provincial Exhibition, Olds Fall Classic and Canadian Western Agribition returned a Grand Champion banner along with division champions and class winners. Our heifer was part of the pair that won the Supreme Female Championship at Agribition. The cattle shows allowed us to stay connected with friends and learn from other producers while creating new friendships.

On a personal note, Scott and his family enjoyed attending customer brandings throughout the spring allowing to see first hand on how well our bulls have worked. The Harvie kids thoroughly enjoyed working on their show cattle and had a blast attending All Breeds in Bashaw. A special thank you to the girls of Ter-Ron for helping out Chick, Gentry & Tel. It's exciting to see these young cattlemen with such enthusiasm, mentoring the younger generation.

If we can be of assistance, give us a call or stop by the farm near Olds anytime to view the bulls. Come early and enjoy the hospitality, we look forward to hosting you on March 21 at the Harvie Crest sale barn.

We stand behind all bulls on offer and look forward to serving all your bull needs.

Sincerely,

The Carson & Harvie Families



Kevin & Tracey Carson
250 878 1000
kevin@carsonair.com
Cherryville, BC



Scott Anderson - Herdsman
587 282 9683



Scott & Kerrie Harvie & Family
403 586 4278
403 586 5655
harviecrest@gmail.com
Olds, AB

view the catalogue online @ www.harviecrestcattle.com

sale management:

Welcome from Bohrson Marketing...

Welcome to the KT Ranches & Harvie Crest Bull Sale that will be located just west of Olds in the beautiful Mountain View County. A great opportunity has unfolded with this new sale for all serious cattlemen that are seeking high quality livestock that are backed by breed leading cow families that offer predictability and production value. The joint venture between these two programs has you, the valued customer as their #1 priority and supplying you the very best genetics in the industry to boost your bottom line and have a strong ROI when pushing your bull(s) through this very sale.

KT Ranches has become the most proactive and determined seedstock operations in the country that has sourced the very best genetics to grow their progressive purebred herd. The attention to detail and passion that Kevin & Tracey have for sourcing the elite cow families has to be commended as they've spared no expense to acquire the very best livestock in the world. They have emphasized on selecting strong udder, excellent footed, structurally correct genetics that have built in production value through generation of proven genetics. There are a strong set of KT bulls on offer that are royally bred and designed for longevity and profitability which you can invest in with the utmost confidence. As they run 900+ cows in the rough terrain of BC, they understand the value of quality cattle and we can guarantee that they'll stand behind their product 100% and ensure you're a very happy customer. The addition of Scott Anderson as their Alberta herdsman was a great move as we have the utmost respect for his cattle knowledge and ability to breed the very best in the industry.

Harvie Crest Cattle is a new and exciting venture for Scott and Kerrie Harvie along with their 3 children Chick, Gentry & Tel. They've worked alongside their family at Harvie Ranching their entire life which is a program that has world-wide recognition in the Hereford/Charolais breed and Scott was an important part of that program success but as they've decided to segregate and start their own Simmental and Angus program, we are excited for their future in those breeds. Their passion for the livestock industry is very evident as they've built a program that is targeted towards quality stock designed for their customers best interest in mind. Scott is indeed a hard-working individual that rides for the brand and will put in the extra effort to build a program that you can invest in with confidence. We encourage you to visit with them as they're proud of the operation and would gladly show you the productive cows behind this set of Harvie Crest & KT bulls.

This sale truly holds a great opportunity for you to invest in outstanding genetics with bulls that are designed for longevity and in turn profitability for you. The sale will be on location at Harvie Crest in their beautiful sale barn and we encourage you to come out for outstanding hospitality with a great meal and refreshments. If you can't attend, feel free to contact any of the KT/Harvie crews or ourselves and you'll be represented in a professional manner to acquire the ideal bull(s) for your program. We look forward to visiting with you on the third Saturday in March for the first annual sale that is sure to be one of the most enjoyable of the spring.

Best regards, *The Bohrson Marketing Team*



BOHRSON
MARKETING SERVICES

Scott Bohrson
403-370-3010

Darryl Snider
780-385-5561

Taylor Richards
306-821-4169

Martin Bohrson
306-220-7901



sale day phones:

Scott Harvie 403-586-4278
Kerrie Harvie 403-586-5655
Scott Anderson 587-282-9683
Kevin Carson 250-878-1000
Scott Bohrson 403-370-3010
Darryl Snider 780-385-5561
Taylor Richards 306-821-4169
Martin Bohrson 306-220-7901

sale day consultants:

Rob Bergevin 403-625-7171
Joel Waddell 403-512-6151

sale staff:

Auctioneer: Colonel Ryan Dorran 403-507-6483
Ring Service: Rod McLeod 403-540-7986
Ring Service: Taylor Richards 306-821-4169



sale location

NEW SALE FACILITY AT HARVIE CREST CATTLE.

From Olds, travel 6 miles south on Hwy 2A. Turn West (right) onto Bergen Road (Didsbury/Olds Airport) and go 9 miles. Turn South (left) onto Range Road 31 and continue 1/2 mile to the first farm on the East side of the road. Turn Left into Harvie Crest Cattle Company and follow the road around to the newly built heated barn.

schedule

SATURDAY, MARCH 21, 2020

10:00 am Cattle available for viewing
5:00 pm Complimentary prime rib supper
6:00 pm KT/HARVIE CREST Bull Sale
by video in heated sale barn

videos

Videos of all sale animals can be viewed on our website, www.harviecrestcattle.com or www.dlms.ca

accommodations

Pomeroy Inn, Olds, AB • 403-556-8815
Ramada Hotel, Olds, AB • 403-507-8349
Best Western, Olds, AB • 403-556-5900

livestock insurance

Stockman's Insurance - Cassie Dorran 403-507-5953

terms & conditions

Cattle will sell under the standard terms & conditions put forward from the CSA, CAA and BMS. These are available upon request.

sight unseen purchase program

We would like you to attend the sale, but if you can not, you can contact Scott Harvie or any of the Bohrson Marketing team to personally handle your purchase. Call to discuss the offering and we would be happy to assist you with your selections and represent you on sale day. We guarantee full satisfaction upon delivery or you don't own the bull.

delivery

We will deliver bulls to central points in Western Canada and will assist with trucking to Eastern Canada and the USA. Take home your purchase sale day or within one week of the sale and we will deduct \$100 off your purchase price.

volume discounts

Purchase 3 or more bulls and save.

3 bulls - 3% discount	7 bulls - 7% discount
4 bulls - 4% discount	8 bulls - 8% discount
5 bulls - 5% discount	9 bulls - 9% discount
6 bulls - 6% discount	10 + bulls - 10% discount

online viewing & bidding

The entire sale will be available for viewing and bidding via live stream internet access. For more information visit www.dlms.ca

Internet Bidding Available

DLMS
www.dlms.ca

For more information call DLMS:
Mark Shologan 780.699.5082 or
DLMS Purebred Team 780.991.3025



herd bull guarantee

- Bull has passed a semen evaluation by a licensed veterinarian prior to the sale.
- Bull is structurally sound and capable of breeding cows naturally.
- Fleshing ability - within 9 months after breeding season your bull should have recovered the weight loss and be in reasonable, healthy condition with a good quality forage diet. We are not responsible for anything above the purchase price of the bull.
- If the conditions of the Guarantee are not achieved we will do one of four things
 - Replace the bull with one of equal value (most practical during breeding season.)
 - Replace the bull and adjust the value agreed upon (most practical during or before breeding season.)
 - Take back or ship the bull and credit will be given to you for the selection of another bull the following year. (most practical after breeding season.)
 - Take back or ship the bull and a credit will be given to you for the selection of another bull the following year. (most practical after breeding season). After 1 breeding season - 75% of the purchase price. Year 2 - 50% of the purchase price. Year 3 - 25% of the purchase price.

right to semen

KT Ranches and Harvie Crest Cattle Co reserve the right to collect semen on any bull sold through this sale. The semen collection will be at the sellers expense and the buyers convenience. Any semen collected will be collected for in herd use only.

terms

The terms of the sale are cash or cheque, payable at par at the sale location, unless satisfactory credit or invoicing arrangements have been made prior to the sale. The right of property shall not pass until settlement has been made.

announcements

Announcements from the auctioneer will take precedence over any material printed in this catalogue.

registration & transfer

A registration certificate of the animal will be duly transferred to the purchaser for any registered animals.

liability

The owners, their employees, sale staff and representatives accept no liability for accidents that may occur. Persons who attend do so at their own risk.

catalogue

Catalogue design by Kim Matthews, Prime Cut publishing, The information printed is believed to be accurate. Updated sheets and announcements from the black will take precedence over incorrect printed material. Photos and Videos taken by Jordan Buba.

breed average epd's

Simmental

CE	BW	WW	YW	MILK	MCE	MWT	STAY	API	TI
6.8	3.3	69.8	102.9	25.1	3.8	59.2	16.2	115.32	65.69

Angus

BW	WW	YW	MILK	TM	CE	MCE
2.0	47	83	22	45	3.6	7.2





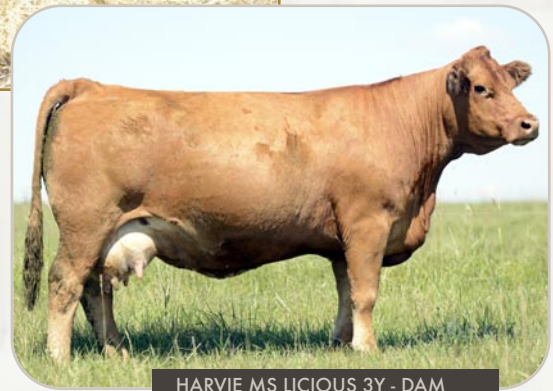
If you want to add pounds in the fall, this is your herd bull. Pretty Boy Floyd is flat awesome and has been one of our favourite's since day one. His dam Licious 3Y is the highest indexing cow on the place year in and year out, continuing to produce great ones. For the last two years, she has weaned off calves who gain 2 lbs per day above the industry average, making 9094's future offspring have a great ROI. We plan on using 9094G in our herd to replace Splash who has done an exceptional job of making great uddered females and power house bull calves. Bulls like this don't come around all the time; he has as much potential to positively influence the Simmental breed as any herd bull we've ever produced. This bull will be very fun to be a part of!!

01 S: HARVIE JDF SPLASH 108B LFE BS LEWIS 322U
JDF PEPSI 61U

KT Pretty Boy Floyd 9094G BPG1284550
KT 9094G

Polled • Black • Purebred • February 19 2019

BW: 95	D: HARVIE MS LICIOUS 3Y	WHEATLAND RED ACE 747T							
WW: 943		WFL LICIOUS LASS 9026W							
YW: 1562									
CE	BW	WW	YW	MILK	MCE	MWT	STAY	API	TI
8.8	3.1	75.3	108.1	18.6	1.8	56.3	13.5	111.42	67.33



HARVIE MS LICIOUS 3Y - DAM



Probably the most eye catching bull in the pen and WOW does he have a great look to him. Splash 9111G has the money strip blaze to him that'll demand a premium on his calves when they hit the market in the fall. His dam, Roxy 219D is one of Scott Harvie's favourite red cows who has a flawless udder and great feet. She is the type of cow you could have a whole herd of and know they would be problem free. Don't be afraid to use this bull in the heifer pen as you can only appreciate his smooth front end and 82 lbs birth weight.



KT SPLASH 9111G



HARVIE LOTTO 219D - DAM

02 S: HARVIE JDF SPLASH 108B LFE BS LEWIS 322U
JDF PEPSI 61U

KT Splash 9111G BPG1301668
KT 9111G

Polled • Black • Purebred • March 07 2019

BW: 83	D: HARVIE LOTTO 219D	SPRINGCREEK LOTTO 52Y							
WW: 856		DOUBLE BAR D ROXY 186X							
YW: 1350									
CE	BW	WW	YW	MILK	MCE	MWT	STAY	API	TI
7.6	3.2	70.5	103.4	22.2	3.0	57.5	16.1	109.02	62.58

SIMMENTAL



Full Sib
Brothers sell
as Lots 3&4

03

03

S: W/C LOADED UP 1119Y

REMINGTON LOCK N LOAD 54U
AUBREYS BLACK BLAZE III

Harviecrest Loaded 4 Bear 9099G BPTG1284644
HC 9099G

Polled • Black • Purebred • February 21 2019

BW: 85	D: HARVIE DAKOTA ROSE 11Z	HARVIE JDF WALLBANGER111X								
WW: 848		WS DAKOTA ROSE M86								
YW: 1370										
	CE	BW	WW	YW	MILK	MCE	MWT	STAY	API	TI
	10.0	2.0	71.6	104.9	15.9	5.9	51.7	14.6	116.19	66.55



W/C LOADED UP 1119Y - SIRE LOT 3

04

S: HARVIE JDF SPLASH 108B

LFE BS LEWIS 322U
JDF PEPSI 61U

Harviecrest Ambush 9093G BPTG1284641
HC 9093G

Polled • Black • Purebred • February 19 2019

BW: 89	D: HARVIE DAKOTA ROSE 11Z	HARVIE JDF WALLBANGER111X								
WW: 809		WS DAKOTA ROSE M86								
YW: 1253										
	CE	BW	WW	YW	MILK	MCE	MWT	STAY	API	TI
	12.0	2.7	77.2	114.7	13.8	7.5	52.4	14.1	115.08	67.45



HARVIE DAKOTA ROSE 11Z - DAM



04

These two blazed face studs have been a standout all summer long. They are super eye appealing with great extension up through their front end and carry that extra length all the way down their spine. They are maternal brothers to the breeding power house Red Summit 54B, who continues to get better with age. His daughters have all dropped gorgeous udders and have turned into great mother cows. These two bull calves will stamp out a set of progeny that will represent the Simmental breed well with their money strip facial markings.



05

05

S: WLB BOUNTY HUNTER 365C LFE BOUNTY 3118Z
LFE BS MARY 26A

KT Bounty Hunter 9049G

BPG1301679
KT 9049G

Polled • Black • Purebred • January 28 2019

BW: 102
WW: 728
YW: 1231

D: SVS SODA POP 788E MADER WALK THIS WAY 224B
CMS SODA POP 410B

CE	BW	WW	YW	MILK	MCE	MWT	STAY	API	TI
8.0	2.3	76.2	121.0	23.1	4.4	61.2	18.0	130.37	72.97

A standout Bounty Hunter son out of the legendary Soda Pop cow family. This sharp looking blazed face stud is good from the ground up; he's soft made, big hiped and is really deep barreled. As 9049G develops, he is really showing a nice herd bull look and would be worth the investment. It will be exciting to see what he can add to a herd as he brings a lot of good to the plate!!



SVS SODA POP 788E - DAM



06

06

S: RUST RIO GRANDE 7022 ET WFL WESTCOTT 24C
RF CERTAINLY FLIRTIN 202Z

KT Rio Grande 9363G

BPTG1301950KT
9363G

Polled • Black • Purebred • February 20 2019

BW: 100
WW: 669
YW: 1156

D: ELLES PANDORA 1E MR TR HAMMER 308A ET
DRAKE PRADA 1C

CE	BW	WW	YW	MILK	MCE	MWT	STAY	API	TI
5.7	3.7	77.4	118.8	20.9	0.3	59.5	14.8	114.79	69.71

A real eye catching herd bull out of our Pandora donor cow. Rio 9363G is very eye catching showing off his thick hair coat and cool white blaze face marking. His dam Pandora was one of the high selling heifer calves out of Friday Nights Lights. Look for 9363G to sire some real nice fronted calves with a great look to them.



ELLES PANDORA 1E - DAM



07

07

S: HARVIE MOTIVE 46D SPRINGCREEK ADVANCE 38B
HARVIE MS WANDA 98Z

Harviecrest Motive 9045G

BPRS1292229
HC 9045G

Polled • Black • SimAngus 3/4 • January 26 2019

BW: 81
WW: 745
YW: 1291

D: HARVIECREST MISS PRIDE 184E WLB STOCKMAN 420B
BOSS MISS LEGACY 3117

CE	BW	WW	YW	MILK	MCE	MWT	STAY	API	TI
8.4	2.0	73.4	109.9	23.9	3.2	60.6	13.1	107.70	65.33

9045G is out of one of our favourite 2 year old cows; she is big time and out of our Pride 3117 Angus donor cow. Motive 9045G has been one of the high indexing calves from birth to weaning and then again from weaning to yearling weight. This SimAngus stud might be the most well rounded bull in the sale from his 81 lbs birth weight to his great grow numbers. We think he'll be an incredible female maker and leave a very positive impact in any herd.



08

08

S: CCLT ALLIANCE 91C

WS PILGRIM H182U
BROOKS SHINIA 1A

KT Alliance 9037G

BPG1301633
KT 9037G

Polled • Black • Purebred • January 22 2019

BW: 95
WW: 755
YW: 1237

D: HARVIE MS PEPSI 106D

LFE THE RIDDLER 323B
JDF PEPSI 61U

CE	BW	WW	YW	MILK	MCE	MWT	STAY	API	TI
7.3	3.2	79.4	113.1	18.2	4.2	57.9	15.6	123.66	73.26

A real stout made bull with lots of shape and red meat in him. 9037G will be an ideal candidate to add yield into a program and would really shine in an Angus based herd. Backed by a very strong Riddler daughter who are known for adding performance and shape returning a lot of investment for their owners.



HARVIE MS PEPSI 106D - DAM



09

09

S: CCLT ALLIANCE 91C

WS PILGRIM H182U
BROOKS SHINIA 1A

KT Alliance 9008G

PG1292818
KT 9008G

Polled • Red • Purebred • January 7 2019

BW: 97
WW: 695
YW: 1177

D: MRL MISS 7362E

MRL MISSILE 138C
MRL MISS 2386Z \ HP-HEP

CE	BW	WW	YW	MILK	MCE	MWT	STAY	API	TI
8.3	3.2	73.4	98.6	18.5	4.9	55.2	14.2	117.24	68.90

A pasture favourite all summer long amongst all those that toured. Alliance 9008G is a big bodied, stout bull who will add a lot of performance and shape to his progeny. We purchased his dam MRL 7362 from McMillen Ranching who was the high selling female from their fall sale that year. This big bodied Missile daughter will play a key roll in our donor program going forward as she adds a great outcross pedigree to the herd.



MRL MISS 7362E - DAM



10

10

S: NCB COBRA 47Y

LFE VIPER 455U
NCB MISS DREAM 22T

KT Cobra 9062G

BPG1265375
KT 9062G

Polled • Black • Purebred • January 12 2019

BW: 86
WW: 712
YW: 1269

D: SPRINGCREEK B GOLD 39E

MRL WARRIOR 19B
SPRINGCREEK B GOLD 75C

CE	BW	WW	YW	MILK	MCE	MWT	STAY	API	TI
13.2	-0.3	64.5	92.3	23.4	9.7	55.7	17.9	131.29	67.73

A real nice Cobra son that is a real belly dragger with lots of shape and great hair. This first calf heifer did a fantastic job raising this bull.

SIMMENTAL



11



WHL COUNTESS 1764E - DAM

11

S: NCB COBRA 47Y

LFE VIPER 455U
NCB MISS DREAM 22T

KT Cobra 9011G

BPRS1292820
KT 9011G

Polled • Black • Purebred • January 12 2019

BW: 72
WW: 702
YW: 1290

D: WHL COUNTESS 1764E

RF MERCHANT 481B
THUNDER CREEK COUNTESS 21Y

CE	BW	WW	YW	MILK	MCE	MWT	STAY	API	TI
13.8	0.0	70.3	103.3	19.3	9.5	54.4	16.7	127.01	67.68

9011G is backed by one of our favourite donors on the ranch, WHL Countess 1764. His dam has a perfect udder and will be worth coming early to check her out as she's the type you could build a herd around. Cobra 9011G will really make some great females from the ground up; he's backed by the well recognized Cobra bull who is famous for his soundness and beautiful udders on his females. Don't over look the performance this herd bull is packing, he's one of the high performing bulls in the pen.



12



NCB COBRA 47Y - SIRE LOT 10,11 & 12

12

S: NCB COBRA 47Y

LFE VIPER 455U
NCB MISS DREAM 22T

KT Cobra 9044G

PG1301662
KT 9044G

Polled • Red • Purebred • January 25 2019

BW: 78
WW: 678
YW: 1130

D: SPRINGCREEK BELLE 78E

MRL WARRIOR 19B
SPRINGCREEK BELLE 122B

CE	BW	WW	YW	MILK	MCE	MWT	STAY	API	TI
9.7	1.0	64.7	94.2	25.1	6.5	57.5	17.8	124.57	66.01

A direct Cobra son out of the paternal power house who's semen is longer available. 9044G's offspring will be a dream to calve with his 78lbs birth weight while not sacrificing performance.



14



RF/MCC/CD FLIRT 770E - DAM

14

S: MADER/CS/RUST CRUZ 3D

LFE BOUNTY 3118Z
LFE BS VIOLET 641A

KT Custom Built 9042G

BPG1301634
KT 9042G

Polled • Black • Purebred • January 24 2019

BW: 78
WW: 751
YW: 1196

D: RF/MCC/CD FLIRT 770E

WFL WESTCOTT 24C
RF FLIRT 423B

CE	BW	WW	YW	MILK	MCE	MWT	STAY	API	TI
8.2	3.2	82.8	128.7	21.5	4.9	62.9	13.9	124.39	76.34

One of the most eye appealing bulls in the sale and is truly a complete breeding package. Custom Built has a super modest birth weight of 78 lbs yet has one of the heaviest weaning weights. He is backed by some of the most influential cows in the Simmental breed including "Flirt" whom are known for excellent feet and very easy doing.

SIMMENTAL



15

15

S: MADER/CS/RUST CRUZ 3D

LFE BOUNTY 3118Z
LFE BS VIOLET 641A

KT Cruz 9020G

BPRS1301629
KT 9020G

Polled • Black • SimAngus 3/4 • January 172019

BW: 80
WW: 674
YW: 1178

D: MUIRHEADS BLK SASS 23E
SOO LINE MOTIVE 9016
MUIRHEADS BLK SASS 146C

CE	BW	WW	YW	MILK	MCE	MWT	STAY	API	TI
10.8	0.8	68.9	107.2	23.7	5.2	58.2	14.4	121.73	67.97

A super cool SimAngus calf out of a real nice Motive daughter. 9020G is a great example why we love our Cruz calves; they calve easy and they grow with lots of shape and muscle definition. 9020G will work in the heifer pen or a group of cows that you don't want to watch calve out.



16

16

S: MADER/CS/RUST CRUZ 3D

LFE BOUNTY 3118Z
LFE BS VIOLET 641A

KT Cruz 9041G

BPG1304850
KT 9041G

Polled • Black • Purebred • January 24 2019

BW: 85
WW: 640
YW: 1170

D: IPU 227A MS. PASHMENIA 122E
WFL WESTCOTT 24C
IPU 403P PASHMENIA 227A

CE	BW	WW	YW	MILK	MCE	MWT	STAY	API	TI
7.9	2.7	75.7	116.3	26.2	6.0	64.1	16.7	122.78	70.82

A real complete Cruz son displaying lots of shape and muscle with some grow to him. His dam is a real nice Westcott daughter we purchased from Barry Labatte; Pashmenia 122E is an ideal cow, you may not appreciate how good she is until you see the calf she can raise.



17

17

S: MADER/CS/RUST CRUZ 3D

LFE BOUNTY 3118Z
LFE BS VIOLET 641A

KT Cruz 9173G

BPG1301796
KT 9173G

Polled • Black • Purebred • January 18 2019

BW: 98
WW: 628
YW: 1195

D: KT MS HINSDALE 593E
SVF ALLEGIANCE Y802
WFL MS HINSDALE 593C

CE	BW	WW	YW	MILK	MCE	MWT	STAY	API	TI
9.9	1.5	62.9	98.8	28.9	7.2	60.4	16.8	128.62	67.70

A real eye appealing Cruz calf that has been one of Scott's favourites. His shear mass and stylish look is hard to miss. Cruz 9173G carries so many desirable Simmental traits from his beauty blaze face to the extra hair and not to mention all the performance he carries. The females and steers this stud is going to sire will be fun to sell and will demand a premium.



18

18

S: RUST CAPTAIN MORGAN 301E

SVS CAPTAIN MORGAN 11Z
SOO LINE ROSE 1019

KT Captain 9338G

Pending
KT 9038G

Polled • Black • SimAngus • February 20 2019

BW: 101
WW: 682
YW: 1208

D: WFL MS HINSDALE 593C
LFE CROSS FIRE 365T
WFL MS HINSDALE 9093W

CE	BW	WW	YW	MILK	MCE	MWT	STAY	API	TI
----	----	----	----	------	-----	-----	------	-----	----

When you want to add great cow families to your herd, the Rose family will be high on the list. Captain 9338G is going to be a cow maker; this easy fleshing calf is impressive and one who will pass it onto his progeny. This bull calf will be worth a second look sale day as he's getting better all the time.



19



20

19

S: RUST RIO GRANDE 7022 ET WFL WESTCOTT 24C
RF CERTAINLY FLIRTIN 202Z

KT Rio Grande 9199G

BPTG1301952
KT 9199G

Polled • Black • Purebred • January 25 2019

BW: 98	D: SVS BLK JENNA 761E	MADER WALK THIS WAY 224B								
WW: 702		SVS BLK JENNA 18Z								
YW: 1279										
	CE	BW	WW	YW	MILK	MCE	MWT	STAY	API	TI
	4.7	3.8	83.7	128.6	21.0	0.8	62.8	15.8	115.76	72.10

20

S: RUST RIO GRANDE 7022 ET WFL WESTCOTT 24C
RF CERTAINLY FLIRTIN 202Z

KT Rio Grande 9201G

BPTG1301954
KT 9201G

Polled • Black • Purebred • January 25 2019

BW: 96	D: SVS BLK JENNA 761E	MADER WALK THIS WAY 224B								
WW: 727		SVS BLK JENNA 18Z								
YW: 1203										
	CE	BW	WW	YW	MILK	MCE	MWT	STAY	API	TI
	4.7	3.8	83.7	128.6	21.0	0.8	62.8	15.8	115.76	72.10

Power and performance would be the best way to describe these flush brothers. If you're looking to add some performance with a whole lot of maternal strength, these brothers will get you there very quick. These brothers will be easy to find sale day as they are right at the front end of the black pen. Be sure to come early and check out their dam Jenna 761 and see what kind of cow backs these two bulls.



21



SVS BLK JENNA 716E - DAM



RUST RIO GRANDE 7022 - SIRE

21

S: RUST RIO GRANDE 7022 ET WFL WESTCOTT 24C
RF CERTAINLY FLIRTIN 202Z

KT El Paso 9204G

PTG1301955
KT 9204G

Polled • Red • Purebred • January 27 2019

BW: 88	D: SVS BLK JENNA 761E	MADER WALK THIS WAY 224B								
WW: 696		SVS BLK JENNA 18Z								
YW: 1200										
	CE	BW	WW	YW	MILK	MCE	MWT	STAY	API	TI
	4.7	3.8	83.7	128.6	21.0	0.8	62.8	15.8	115.76	72.10

Wow, what a breeding tool El Paso will be. He has had a herd bull look to him ever since day one. 9204G is long as a freight train, big topped and deep barreled. When you talk pedigree, it can't get any more exciting as this calf is a direct son of the \$60,000 US Rio Grande bull we purchased from Rust's. Rio is proving himself and has done a great job on his first calf crop. Maternally, you can't get any better then out of the legendary Jenna cow family, one of the hottest cow families in the breed. All of El Paso's progeny will qualify for Bohrsen Marketing Jenna/Flirt sale event 2021. El Paso is worth a serious look if you are in the hunt for a red herd sire.

SIMMENTAL



22



RF CERTAINLY FLIRTIN 620D - DAM

22

S: RUST RIO GRANDE 7022 ET WFL WESTCOTT 24C
RF CERTAINLY FLIRTIN 202Z

Harviecrest Rio 9095G

PTG1292353
HC 9095G

Polled • Red • Purebred • February 19 2019

BW: 98 D: RF CERTAINLY FLIRTIN 620D SVS CAPTAIN MORGAN 11Z
WW: 807 RF CERTAINLY FLIRTIN 202Z

CE	BW	WW	YW	MILK	MCE	MWT	STAY	API	TI
6.1	3.8	75.9	117.6	19.0	0.5	57.0	14.7	112.59	67.74

One of the most exciting pedigreed bulls in the line up. Rio 9095G is double bred to the Flirt 202Z cow, one of the highest dollar indexing cows in the Simmental breed. Look for this calf to stamp some of the nicest replacement females out there for foot and udder qualities. This Rio bull calf is very solid, he's middling down nice and really going to develop into a very solid herd bull.



23



BGS/BM CAPTAIN SCREAM 63D - SIRE

23

S: BGS/BM CAPTAIN SCREAM 63D SVS CAPTAIN MORGAN 11Z
RF SCREAM 215Z

KT Jack Sparrow 9007G

PTG1284591
KT 9007G

Polled • Red • Purebred • January 7 2019

BW: 85 D: BEECH BROS YARA 122Y IPU REVOLUTION 172U
WW: 912 BEECH BROS UNNA 817U

CE	BW	WW	YW	MILK	MCE	MWT	STAY	API	TI
1.5	4.3	73.9	108.2	18.7	0.5	55.7	12.0	94.78	62.73

Big time sale feature, Jack Sparrow has been a stand out since day one. A high performing, big haired, long spined power house. Jack Sparrow was successfully campaigned this fall winning the IPE All Breeds jackpot show as well as being Olds Fall Classic Simmental Senior Bull Calf Champion. 9007G is backed by one of the most proven cows in the breed; Yara 122Y year after year has produced herd bulls and high selling females. Sired by Captain Scream is an added bonus as he continues to produce progeny that are high in demand. Jack Sparrow is worth a serious look if you are in the hunt for a red herd bull. If we weren't walking the Betts bull whom is his paternal brother, he would not be for sale!!



24



25



26



HARVIE MS PEPSI 20B - DAM

24 S: BGS/BM CAPTAIN SCREAM 63D SVS CAPTAIN MORGAN 11Z
RF SCREAM 215Z

Harviecrest Capone 9074G PTG1284631
HC 9074G

Polled • Red • Purebred • February 12 2019

BW: 85	D: HARVIE MS PEPSI 20B	KWA FLYF RED MOUNTAIN 16Z								
WW: 748		HARVIE MS PEPSI 260Z								
YW: 1263	CE	BW	WW	YW	MILK	MCE	MWT	STAY	API	TI
	4.9	4.6	88.0	135.1	19.4	1.8	63.4	14.8	120.59	76.35

25 S: BGS/BM CAPTAIN SCREAM 63D SVS CAPTAIN MORGAN 11Z
RF SCREAM 215Z

Harviecrest Trust 9088G PTG1284633
HC 9088G

Polled • Red • Purebred • February 17 2019

BW: 94	D: HARVIE MS PEPSI 20B	KWA FLYF RED MOUNTAIN 16Z								
WW: 817		HARVIE MS PEPSI 260Z								
YW: 1417	CE	BW	WW	YW	MILK	MCE	MWT	STAY	API	TI
	5.1	4.3	86.3	132.6	19.3	1.8	62.5	15.3	121.72	75.72

26 S: BGS/BM CAPTAIN SCREAM 63D SVS CAPTAIN MORGAN 11Z
RF SCREAM 215Z

Harviecrest Rainman 9092G PTG1284638
HC 9092G

Polled • Black • Purebred • February 19 2019

BW: 95	D: HARVIE MS PEPSI 20B	KWA FLYF RED MOUNTAIN 16Z								
WW: 843		HARVIE MS PEPSI 260Z								
YW: 1324	CE	BW	WW	YW	MILK	MCE	MWT	STAY	API	TI
	5.1	4.3	86.3	132.6	19.3	1.8	62.5	15.3	121.72	75.72

When it works, it works!! These three full brothers are all very good in their own right. They are stout, thick made, great haired and to top it off they are very good numbered. These boys will add a lot of performance as they are in the top 5% for both weaning and yearling weights. Just imagine how much fun it would be to turn these guys out together to see what their calf crop would be worth. The female offspring will be super maternal going back to Pepsi 20B who is a top red donor for us here at the ranch. Their replacements will demand a premium.



27 S: KWA RED ITALIAN 122E MRL CAPONE 130B
KWA MS ROCK 14X
KT Red Italian 115G PG1301628
KT 115G
Polled • Red • Purebred • February 11 2019

BW: 78	D: WFL MISS RED DOLL 713E	R PLUS RELOAD 2006Z							
WW: 796		WFL MS RED DOLL 9072W							
YW: 1249									
CE	BW	WW	YW	MILK	MCE	MWT	STAY	API	TI
11.3	0.4	74.4	111.0	14.1	6.6	51.3	19.4	152.51	79.83

We always expect our two year olds to deliver some of the best calves and this Red Doll cow did. Red Doll is well on her way to becoming a foundation cow with a perfect udder and great body type. Red Italian 115G is a big time candidate for the heifer pen; he's smooth shouldered and very nice headed but has more than enough muscle shape to add pounds to his calves.



28 S: WFL WESTCOTT 24C TNT 90 PROOF Z401
WFL SWEET LICIOUS 1044X
KT Westcott Drive 9203G PTG1302420
KT 9203G
Polled • Red • Purebred • January 27 2019

BW: 98	D: RUST MISS SADIE 505C	SVS CAPTAIN MORGAN 11Z							
WW: 741		TNT MISS SADIE M68							
YW: 1253									
CE	BW	WW	YW	MILK	MCE	MWT	STAY	API	TI
4.4	4.7	82.5	127.5	23.9	0.1	65.2	13.8	109.06	70.47

One of the top red bull calves, he was Kevin's pick all summer long and when you see him you'll know why. Westcott Drive 9203G is a prime example why the Westcott calves are so popular; the amount of shear mass and performance he carries is so impressive and is a reason why the Simmental breed can be so dually purpose both maternal and performance. On the bottom side, 9203G is backed by the great Sadie M68, one of the strongest cow making families in the breed. Here is your chance to get the total package!



WFL WESTCOTT 24C- SIRE

29 S: WFL WESTCOTT 24C TNT 90 PROOF Z401
WFL SWEET LICIOUS 1044X
KT Bergen 9016G PTG1284595
KT 9016G
Polled • Red • Purebred • January 14 2019

BW: 93	D: BEECH BROS YARA 122Y	IPU REVOLUTION 172U							
WW: 808		BEECH BROS UNNA 817U							
YW: 1354									
CE	BW	WW	YW	MILK	MCE	MWT	STAY	API	TI
2.2	4.4	74.9	109.6	25.0	-1.0	62.5	14.1	102.22	64.94

Bergen represents what we think the Simmental breed should be; high performing with mass and dimension and lots of thick red hair. Bergen is only getting better as he matures and is becoming Scott Harvie's pick in the red pen. Seeing him along side his maternal brother, you'll certainly notice how impactful the Yara family will be as they have maternal sisters who are at the very top of the replacement pen.



30

30

S: IPU RED DEPUTY 25C

KUNTZ SHERIFF 8A
IPU 56U MS. RED LINER 81A

KT Red Deputy 9003G

PG1292816
KT 9003G

Polled • Red • Purebred • January 6 2019

BW: 83
WW: 745
YW: 1237

D: BEE WITNEY 722E

PWK CLIFFHANGER 18C
BEE WHITNEY 501C

CE	BW	WW	YW	MILK	MCE	MWT	STAY	API	TI
9.1	2.0	75.0	113.3	26.6	3.5	64.1	16.8	129.54	73.38

Red Deputy 9003G is another heifer bull candidate for the red pen who checks off a lot of boxes; calving ease, a ton of growth with an awesome hair coat. 9003G's dam Whitney 722E is one of our favourite cows that we've added to the lineup; she is very maternal with a gorgeous udder and her ability to maintain body condition while raising a high performing bull calf. We except big things from her down the road.



31

31

S: IPU 2Y DILLINGER 80B

TNT BOOTLEGGER Z268
IPU 52N MS POCAHONTAS 2Y

KT Dillinger 9023G

PG1301631
KT 9023G

Polled • Red • Purebred • January 18 2019

BW: 95
WW: 727
YW: 1256

D: IPU 60C MS. POCAHONTAS 15E IPU RED DEPUTY 25C
IPU 197X POCAHONTAS 60C

CE	BW	WW	YW	MILK	MCE	MWT	STAY	API	TI
10.3	1.9	74.6	113.6	24.7	5.4	62.0	15.8	123.68	70.74

Pocahontas 15E was the high selling bred heifer out of the Simmsational Sale last year and what a cow she has become raising this herd bull. 9023G is super sound and athletic, a bull who will get out and cover some cows. This Dillinger calf has a lot of calving ease and growth bred into his pedigree not to mention the best cow family in the IPU herd..." Pocahontas"; they are becoming some real maternal gems!!



32

32

S: HARVIE RED SUMMIT 54B

KWA FLYF RED MOUNTAIN 16Z
HARVIE DAKOTA ROSE 11Z

KT Red Summit 9009G

PG1292819
KT 9009G

Polled • Red • Purebred • January 10 2019

BW: 78
WW: 674
YW: 1235

D: SKYWEST ELLIE

WFL IDENTITY 23X
BROCK WALHALLA

CE	BW	WW	YW	MILK	MCE	MWT	STAY	API	TI
8.7	2.8	78.2	114.7	21.2	5.2	60.3	13.7	109.48	67.87

Another super solid Red Summit son. A very impressive 78 lbs birth weight to one of the heaviest weaning weights. 9009G is thick, hairy and round. His calves will come easy yet they should pound down the scales. His dam Ellie 42E has a nice udder, good feet and is a solid producer. Red Summit 9009G will work in either the heifer or cow pen making great steers or heifers.



33

33

S: HARVIE RED SUMMIT 54B

KWA FLYF RED MOUNTAIN 16Z
HARVIE DAKOTA ROSE 11Z

KT Red Summit 9001G

PG1292814
KT 9001G

Scurred • Red • Purebred • January 1 2019

BW: 92
WW: 701
YW: 1252

D: CITY VIEW KORA 41E

BOUNDARY STUBBY 129A
CITY VIEW 34Y KORA 336A

CE	BW	WW	YW	MILK	MCE	MWT	STAY	API	TI
10.1	2.3	76.0	111.3	22.3	4.4	60.3	16.3	119.69	68.91

This is a prime example of why we're such big fans of Red Summit; moderate birth weight with lots of growth. 9001G is long as he is deep with great hair. His dam was a high seller out of the Red and Black sale. Kora 41E has an exceptional udder and is turning out to be a very nice 2 year old who not only weaned off one of the heaviest calves but also bred back early which is not an easy feat. Red Summit 9001G will add great feet and udders to his daughters and they'll be worth keeping.



34

34

S: OUTLAW MR REMEDY 769E OUTLAW GAGA GANGSTA 9B
CMS SODA POP 412B

KT Remedy This 9089G

PTG1284563
KT 9089G

Scurred • Red • Purebred • February 18 2019

BW: 97
WW: 844
YW: 1343

D: MISS R PLUS 6132D

R PLUS HITMAN 4194B
MISS R PLUS 8053U

CE	BW	WW	YW	MILK	MCE	MWT	STAY	API	TI
5.6	3.0	68.5	102.1	24.8	2.6	59.1	17.5	124.13	68.68

A rock solid bull with great performance. 9089G is an ET calf out of our donor cow 6163D who was our pick of the R-Plus herd. She is one of the nicest footed simmental cows we've added to the herd and she calved out with a gorgeous udder. If you're searching for a little different pedigree to add both maternal and strong carcass qualities, take a close look at Remedy 9089G



35

35

S: HARVIE RED SUMMIT 20D HARVIE RED SUMMIT 54B
WINDMILL MS LINER 84W

KT Red Summit 9460G

Unregistered
KT 9460G

Polled • Red • SimAngus 1/2 • February 26 2019

BW: 98
WW: 647
YW: 1217

D: RED SVR JINNY 205D

RED CLAY BANDIT 18X
RED SVR JINNY 19X

CE	BW	WW	YW	MILK	MCE	MWT	STAY	API	TI

The first son off the \$30,000 Red Summit son to sell and this outcross red SimAngus is a pretty good way to start. 9460G is great haired and big mid-dled. The maternal strength in this bull will be a real cow maker but look for his steer calves to have some grow to them and pound down the scales in the fall!!



36

36

S: HBH EXCELLENCE 63E POSS ELEMENT 215
GREENBUSH GEORGINA 3X

KT Excellence 9102G

BPRS1301677
KT 9102G

Polled • Black • SimAngus 1/2 • February 24 2019

BW: 93
WW: 672
YW: 1193

D: SPRINGCREEK ADDIE 108E

SPRINGCREEK GLADIATOR118C
SPRINGCREEK ADDIE 130B

CE	BW	WW	YW	MILK	MCE	MWT	STAY	API	TI
10.7	1.9	77.7	117.5	23.0	7.2	61.9	16.5	126.55	71.42

A solid SimAngus bull with great feet and legs under him and will cover a lot of ground in pasture. 9102G would work good on British cross cows as he'll add some yield to his progeny without giving up any maternal traits.



37

37

S: LFE ROYAL BLACK 3001D BROOKING BANK NOTE 4040
LFE BA BLACK ANGEL 2074W

KT Royal Black 9063G

BPRS1264221
KT 9063G

Polled • Black • SimAngus 1/2 • January 4 2019

BW: 66
WW: 627
YW: 1210

D: SPRINGCREEK B GOLD 70E

vSPRINGCREEK GLADIATOR118C
SPRINGCREEK B GOLD 100Z

CE	BW	WW	YW	MILK	MCE	MWT	STAY	API	TI
8.0	3.5	82.1	125.7	16.0	5.1	57.1	14.4	119.75	71.90

One of the best haired bulls in the line up, 9063G is big topped and has lot of muscle expression. If you're looking to add performance to your calf crop, take a good look at 9063G.

SIMMENTAL



38



HARVIECREST TEXAS JACK 9035G



HARVIECREST PRIDE 9046G - SISTER

38

S: HA COWBOY UP 5405

HA OUTSIDE 3008
HA BLACKCAP LADY 1602

Harviecrest Texas Jack 9035G

2120698
HAR 9035G

Purebred Angus • January 21 2019

BW: 95	D: BOSS MISS LEGACY 3117	O C C LEGACY 839L				
WW: 873		BROOKMORE PRIDE 66T				
YW: 1397						
BW	WW	YW	MILK	TM	CE	MCE
0.2	60	110	16	46	13.0	5.0

Sale feature Texas Jack has all the makings to be a big time herd bull and has been a favourite amongst all the visitors here over the summer. You have to appreciate the muscle shape and dimension 9035G brings to the plate as he will add a lot of red meat to any program. He is backed by the great donor 3117 whom is one of the best OCC Legacy daughter's we've seen, known for perfect udders and their ability to be easy keepers. We had the opportunity to show Texas Jack on the show road this fall, proving to rise to the top along with his full sister.



BOSS MISS LEGACY 3117 - DAM

39

S: HA COWBOY UP 5405

HA OUTSIDE 3008
HA BLACKCAP LADY 1602

Harviecrest Cowboy Up 9024G

2118528
HAR 9024G

Purebred Angus • January 18 2019

BW: 65	D: BOSS MISS LEGACY 3117	O C C LEGACY 839L				
WW: 647		BROOKMORE PRIDE 66T				
YW: 1199						
BW	WW	YW	MILK	TM	CE	MCE
2.3	56	105	14	42	9.5	5.0

Cowboy Up 9024G is a direct daughter of 3117, the foundation angus cow here on our ranch. 3117 is one of the best footed cows we've come across in our travels and is so easy doing, she is a cow you want a whole lot more of. Cowboy Up is one of the most sought after bulls to get a son out of for the shape and performance they have. 9024G will make some great steers and even better daughters!!



39



40

S: HA COWBOY UP 5405

HA OUTSIDE 3008
HA BLACKCAP LADY 1602

Harviecrest Cowboy Up 9032G

2107838
HAR 9032G

Purebred Angus • January 21 2019 • Twin

BW: 51
WW: 779
YW: 1343

D: HF ECHO 54B

WK SMOOTH 2382
HF ECHO 19Z

BW	WW	YW	MILK	TM	CE	MCE
----	----	----	------	----	----	-----

3.0	63	115	13	44	4.5	4.5
-----	----	-----	----	----	-----	-----

40



HF ECHO 54B - DAM

9032G is out of one of the best cow families at Hamilton Farms. When you study him, you'll know why they are so popular. This Cowboy Up son was Scott Anderson's pick of the bull calves out here in Alberta. This calf has so much rib shape and capacity, it's hard not to like him. For as much red meat and muscle this bull packs, he can really get out and travel. 9032G is worth a good look sale day if you're in the hunt for a great angus bull. Would recommend him as a cow bull even though he had a 51 lbs birth weight as we'd predict his calves to come between 80-90 lbs.



41

S: HA COWBOY UP 5405

HA OUTSIDE 3008
HA BLACKCAP LADY 1602

Harviecrest Cowboy Up 9058G

2107839
HAR 9058G

Purebred Angus • February 5 2019

BW: 78
WW: 779
YW: 1176

D: PM LASS TRADER 176'16

MAY-WAY BREAKOUT 1310
XO CROWFOOT LASS TRADER 216Z

BW	WW	YW	MILK	TM	CE	MCE
----	----	----	------	----	----	-----

2.3	60	109	20	50	7.0	5.5
-----	----	-----	----	----	-----	-----

41



PM LASS TRADER 176'16 - DAM

Heifer bull prospect, with a real nice dam. Trader Lass was our pick of the females from Poplar Meadow's first female sale and she has flat worked. She has a perfect udder and great feet. This Cowboy Up son will be a safe bet if you want a calving ease bull that you can keep the replacement females out of.



42

S: S A V INSISTENCE 7750

S A V INTERNATIONAL 2020
S A V BLACKCAP MAY 1804

KT Insistence 9184G

Pending
KTC 9184G

Purebred Angus • January 21 2019

BW: 98
WW: 697
YW: 1189

D: REMITALL F ELINE 79D

REMITALL F RAGE 9A
REMITALL F ELINE 16A

BW	WW	YW	MILK	TM	CE	MCE
----	----	----	------	----	----	-----

42



REMITALL F ELINE 79D - DAM

A super cool fronted herd bull that is big middled who gets out and travels. There would be a lot of US college coaches that would say that 9148 moves flawless, moves like a cat. 9148G's dam was one of the high selling females out of the Power and Perfection sale whom has become a donor cow for KT Ranches. She has a beautiful udder and will play a important role in our program going forward.



43

43

S: S A V INSISTENCE 7750

S A V INTERNATIONAL 2020
S A V BLACKCAP MAY 1804

KT Insistence 9364G

Pending
KTC 9364G

Purebred Angus • February 20 2019

BW: 80
WW: 668
YW: 1246

D: RIVERSTONE BARBARA 176C

HIGHLAND MARVEL 80Z
HIGHLAND BARBARA 172T

BW WW YW MILK TM CE MCE

A sharp looking angus bull that has done nothing but grabbed gears in performance. The couple of Insistence calves we have on offer are really good and bring a lot of character and performance to the table. With a moderate 80 lbs birth weight, 9364 will calve easy and his calves will really grow!!



On behalf of the KT and Harvie Crest crews, thank you for your support of our programs!



ANGUS



RS S: KWA FLYF RED MOUNTAIN 16Z IPU RED WESTERN 49X
KWA MS ROCK 14X

RS S: WFL WESTCOTT 24C TNT 90 PROOF Z401
WFL SWEET LICIOUS 1044X

Harvie Red Summit 54B PG801201
HAR 54B
Polled • Red • Purebred Simmental • February 8 2014

Rust Rio Grande 7022 ET PTG1240779
BOHR 22E
Polled • Red • Purebred Simmental • February 28 2017

BW: 88
WW: 845
YW: 1501

D: HARVIE DAKOTA ROSE 11Z HARVIE JDF WALLBANGER111X
WS DAKOTA ROSE M86

CE	BW	WW	YW	MILK	MCE	MWT	STAY	API	TI
12.0	1.0	88.3	137.9	22.2	6.9	66.4	13.9	119.81	75.69

BW:
WW:
YW:

D: RF CERTAINLY FLIRTIN 202Z WHEATLAND STOUT 930W
RF FLIRTIN FOR CERTIN 37U

CE	BW	WW	YW	MILK	MCE	MWT	STAY	API	TI
3.7	5.0	83.0	126.9	20.0	-1.8	61.5	15.5	116.40	72.24

SEMEN AVAILABLE via Canadian Sires

\$60/unit

SEMEN AVAILABLE via Canadian Sires

\$100/unit or \$80/unit for 30



RS S: KUNTZ SHERIFF 8A KUNTZ MARSHALL 12Y
PEACOCK'S LI'L NETTIE 23Y

RS S: LFE COMMISSIONER 811Z 3D BLK FULL THROTTLE 483X
LFE BS LASS 189X

MRL Sleep Easy 140D PTG1185784
MRL 140D
Polled • Red • Purebred Simmental • January 25 2019

Harviecrest Showdown 277F BPTG1266830
HC 277F
Polled • Black • Purebred Simmental • March 2 2018

BW: 82
WW: 760
YW: 1390

D: MRL MISS 836W \ HP-HOP MRL BLACK BEAR 79S
MRL MISS 828S

CE	BW	WW	YW	MILK	MCE	MWT	STAY	API	TI
6.2	2.7	80.9	117.2	20.1	2.1	60.6	16.7	111.78	68.18

BW: 97
WW: 700
YW: 1190

D: FSCI AVA B408 \ HP-HOP CC-RC SVF/NJC BUILT RIGHT N48
CNS BLACK STAR T702

CE	BW	WW	YW	MILK	MCE	MWT	STAY	API	TI
9.2	2.6	58.0	92.1	26.5	4.4	55.5	20.5	123.62	59.82

SEMEN AVAILABLE via Canadian Sires

\$50/unit

SEMEN AVAILABLE

\$75/unit, minimum 10 straws

REFERENCE SIRES



RS S: LFE BS LEWIS 322U R PLUS BLACKEDGE
LFE BS MS ARNOLD 135S

Harvie JDF Splash 180B BPTG834016-
HAR 108B

Polled • Black • Purebred Simmental • February 18 2014

D: JDF PEPSI 61U REMINGTON ON TARGET 2S
JDF MATTIE 61R

BW: 100	CE	BW	WW	YW	MILK	MCE	MWT	STAY	API	TI
WW: 828	8.2	3.6	72.3	103.3	19.7	-0.9	55.9	13.5	101.54	61.61
YW: 1375										

RS S: HA OUTSIDE 3008 KG SOLUTION 0018
HA EVER LADY 1575

HA Cowboy Up 5405 1937042
IMP 5405C

Purebred Angus • January 30 2015

D: HA BLACKCAP LADY 1602 SITZ UPWARD 307R
HA BLACKCAP LADY 5515

BW:	BW	WW	YW	MILK	TM	CE	MCE
WW:	2.6	75	136	10	48	9.0	6.0
YW:							

REFERENCE SIRE



RS S: S A V CUTTING EDGE 4857 S A V HARVESTOR 0338
S A V BLACKCAP MAY 5530

SAV Ajax 8885 2129960
IMP 8885E

Purebred Angus • December 29 2017

D: S A V EMBLYNETTE 2369 S A V 707 RITO 9969
S A V EMBLYNETTE 7566

BW: 75	BW	WW	YW	MILK	TM	CE	MCE
WW:	4.9	67	115	25	-1	1	
YW:							

RS S: S A V INTERNATIONAL 2020 S A V HARVESTOR 0338
S A V EMBLYNETTE 5483

SAV Insistence 7750 AAA +18912930
7750

Purebred Angus • March 4 2017

D: S A V BLACKCAP MAY 1804 S A V IRON MOUNTAIN 8066
S A V MAY 2397

BW:	BW	WW	YW	MILK	TM	CE	MCE
WW:	4.9	67	115	25	-1	1	
YW:							

LIMITED SEMEN PACKAGES AVAILABLE

Contact Kevin Carson





Box 6, Site 12, RR#2
Olds, Alberta, Canada
T4H 1P3



RETURN POSTAGE GUARANTEED
PORT DE RETOUR GARANTI

time sensitive material

